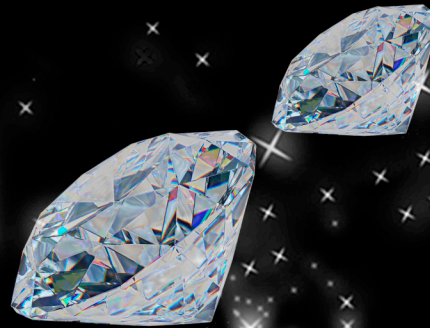




**VISHWA**  
ENGINEERING

Accurate Precision in Measurements



**Manufacturers, Suppliers and Exporters of Diamond Assorting Sieves.**



Set of Plate Nos.	Approximate Stones for pcs/caret	Approximate Stones for Points
00000	630 ct	
0000	430 ct	
000	315 ct	
00	230 ct	0.5 points
0	165 ct	0.6 points
1	145 ct	0.6 points
1.5	130 ct	0.7 points
2	115 ct	0.8 points
2.5	103 ct	0.9 points
3	92 ct	1.0 points
3.5	83 ct	1.2 points
4	76 ct	1.3 points
4.5	69 ct	1.5 points
5	63 ct	1.6 points
5.5	57 ct	1.7 points
6	48 ct	2 points
6.5	38 ct	2.6 points
7	35 ct	2.7 points
7.5	30 ct	2.9 points
8	26 ct	3.8 points
8.5	22.5 ct	4.4 points
9	20 ct	5 points
9.5	18 ct	5.6 points
10	16 ct	6.4 points
10.5	14 ct	7.2 points
11	12.5 ct	8.8 points
11.5	12 ct	9.2 points
12	13 ct	9.8 points
12.5	10 ct	10 points
13	9.5 ct	11.7 points
13.5	9 ct	12.9 points
14	8 ct	14.6 points
14.5	7.5 ct	15.3 points
15	7 ct	16.5 points
15.5	6 ct	18.2 points
16	5.5 ct	19.9 points
16.5	5.25 ct	20.6 points
17	4.75 ct	23 points
17.5	4.5 ct	24.8 points
18	4.25 ct	25.6 points
18.5	4 ct	26.5 points
19	3.70 ct	29 points
19.5	3.33 ct	30 points
20	3 ct	33 points

# Diamond Sieves Size Chart

PLATE Nos.	Size (mm)	PLATE Nos.	Size (mm)	PLATE Nos.	Size (mm)
00000	70	8.25	215	20.5	460
00000.25	72.5	8.5	220	21	470
00000.5	75	8.75	225	21.5	480
00000.75	77.5	9	230	22	490
0000	80	9.25	235	22.5	500
0000.25	82.5	9.5	240	23	510
0000.5	85	9.75	245	23.5	520
0000.75	87.5	10	250	24	530
000	90	10.25	255	24.5	540
000.25	92.5	10.5	260	25	550
000.5	95	10.75	265	25.5	560
000.75	97.5	11	270	26	570
00	100	11.25	275	26.5	580
00.25	102.5	11.5	280	27	590
00.5	105	11.75	285	27.5	600
00.75	107.5	12	290	28	610
0	110	12.25	295	28.5	620
0.5	112.5	12.5	300	29	630
1	115	12.75	305	29.5	640
1.25	117.5	13	310	30	650
1.5	120	13.25	315	30.5	660
1.75	122.5	13.5	320	31	670
2	125	13.75	325	31.5	680
2.25	127.5	14	330	32	690
2.5	130	14.25	335	32.5	700
2.75	132.5	14.5	340	33	710
3	135	14.75	345	33.5	720
3.25	137.5	15	350	34	730
3.5	140	15.25	355	34.5	740
3.75	142.5	15.5	360	35	750
4	145	15.75	365	35.5	760
4.25	147.5	16	370	36	770
4.5	150	16.25	375	36.5	780
4.75	152.5	16.5	380	37	790
5	155	16.75	385	37.5	800
5.25	157.5	17	390	38	810
5.5	160	17.25	395	38.5	820
5.75	165	17.5	400	39	830
6	170	17.75	405	39.5	840
6.25	175	18	410	40	850
6.5	180	18.25	415	41	870
6.75	185	18.5	420	42	890
7	190	18.75	425	43	910
7.25	195	19	430	44	930
7.5	200	19.25	435	45	950
7.75	205	19.5	440	46	970
8	210	19.75	445	47	990
		20	450	48	1010
				49	1030
				50	1050



## Sieves plate for sorting FLAT Diamonds Chart

0.30 mm	0.35 mm	0.40 mm	0.45 mm	0.50 mm
0.55 mm	0.60 mm	0.65 mm	0.70 mm	0.75 mm
0.80 mm	0.85 mm	0.90 mm	0.95 mm	1.00 mm
1.05 mm	1.10 mm	1.15 mm	1.20 mm	1.25 mm
1.30 mm	1.35 mm	1.40 mm	1.45 mm	1.50 mm
1.55 mm	1.60 mm	1.65 mm	1.70 mm	1.75 mm
1.80 mm	1.85 mm	1.90 mm	1.95 mm	2.00 mm
2.05 mm	2.10 mm	2.15 mm	2.20 mm	2.25 mm
2.30 mm	2.35 mm	2.40 mm	2.45 mm	2.50 mm

## Descriptions:

SIEVES SIZE	set plate	SIEVES SIZE	set plate
4.8mm -mini size	23 plates (A)	10.7 mm - maximum size	42 plates (C)
	42 plates (C)		55 plates (D)
	75 plates (E)		75 plates (E)
6.6mm - standard size	23 plates (A)		85 plates (F)
	40 plates (B)		40 plates (B)
	42 plates (C)	6 inches-big size	40 plates (B)
	55 plates (D)		(all size chart numbers)
	75 plates (E)	8 inches -big size	40 plates (B)
	85 plates (F)		(all size chart numbers)
80 mm - standard size	42 plates (C)	4.8 mm Sorting Flat	21 plates (K)
	55 plates (D)	6.6 mm Sorting Flat	21 plates (K)
	75 plates (E)		23 plates (L)
	85 plates (F)	80 mm Sorting Flat	21 plates (K)
	95 plates (G)		23 plates (L)
	105 plates (H)		45 plates (M)
	125 plates (I)	10.7 mm Sorting Flat	21 plates (K)
	135 plates (J)		23 plates (L)
	40 plates (B)		45 plates (M)
		8 Inch Sorting Flat	21 plates (K)



# Diamond Sieves Set of Plate Numbers

## A. 23 Plate from number 000 till 20 full numbers.

90	100	110	115	125	135	145	155	170	190
210	230	250	270	290	310	330	350	370	390
410	430	450							

## B. 40 Plates from number 0000 till 40 full numbers

115	125	135	145	155	170	190	210	230	250
270	290	310	330	350	370	390	410	430	450
470	490	510	530	550	570	590	610	630	650
670	690	710	730	750	770	790	810	830	850

## C. 42 Plate from number 000 till 20 full and half numbers

90	100	110	115	120	125	130	135	140	145
150	155	160	170	180	190	200	210	220	230
240	250	260	270	280	290	300	310	320	330
340	350	360	370	380	390	400	410	420	430
440	450								

## D. 55 Plate from Number 0000 till 15 full & half numbers

80	85	90	95	100	105	110	115	120	125
130	135	140	145	150	155	160	165	170	175
180	185	190	195	200	205	210	215	220	225
230	235	240	245	250	255	260	265	270	275
280	285	290	295	300	305	310	315	320	325
330	335	340	345	350					

## E. 75 Plate from number 0000 till 20 full, half & quarter numbers

80	85	90	95	100	105	110	112.5	115	117.5
120	122.5	125	127.5	130	132.5	135	137.5	140	142.5
145	147.5	150	152.5	155	157.5	160	165	170	175
180	185	190	195	200	205	210	215	220	225
230	235	240	245	250	255	260	265	270	275
280	285	290	295	300	305	310	315	320	325
330	335	340	345	350	360	370	380	390	400
410	420	430	440	450					

# Diamond Sieves Set of Plate Numbers

## F. 85 Plates from number 0000 till 20 full, half & quarter numbers

80	85	90	95	100	105	110	112.5	115	117.5
120	122.5	125	127.5	130	132.5	135	137.5	140	142.5
145	147.5	150	152.5	155	157.5	160	165	170	175
180	185	190	195	200	205	210	215	220	225
230	235	240	245	250	255	260	265	270	275
280	285	290	295	300	305	310	315	320	325
330	335	340	345	350	355	360	365	370	375
380	385	390	395	400	405	410	415	420	425
430	435	440	445	450					

## G. 95 Plates from number 0000 till 40 full, half & quarter numbers

80	85	90	95	100	105	110	112.5	115	117.5
120	122.5	125	127.5	130	132.5	135	137.5	140	142.5
145	147.5	150	152.5	155	157.5	160	165	170	175
180	185	190	195	200	205	210	215	220	225
230	235	240	245	250	255	260	265	270	275
280	285	290	295	300	305	310	315	320	325
330	335	340	345	350	360	370	380	390	400
410	420	430	440	450	470	490	510	530	550
570	590	610	630	650	670	690	710	730	750
770	790	810	830	850					

## H. 105 Plates from number 0000 till 40 full, half & quarter numbers

80	85	90	95	100	105	110	112.5	115	117.5
120	122.5	125	127.5	130	132.5	135	137.5	140	142.5
145	147.5	150	152.5	155	157.5	160	165	170	175
180	185	190	195	200	205	210	215	220	225
230	235	240	245	250	255	260	265	270	275
280	285	290	295	300	305	310	315	320	325
330	335	340	345	350	355	360	365	370	375
380	385	390	395	400	405	410	415	420	425
430	435	440	445	450	470	490	510	530	550
570	590	610	630	650	670	690	710	730	750
770	790	810	830	850					

# Diamond Sieves Set of Plate Numbers

## I. 125 Plates from number 0000 till 40 full, half & quarter numbers

80	85	90	95	100	105	110	112.5	115	117.5
120	122.5	125	127.5	130	132.5	135	137.5	140	142.5
145	147.5	150	152.5	155	157.5	160	165	170	175
180	185	190	195	200	205	210	215	220	225
230	235	240	245	250	255	260	265	270	275
280	285	290	295	300	305	310	315	320	325
330	335	340	345	350	355	360	365	370	375
380	385	390	395	400	405	410	415	420	425
430	435	440	445	450	460	470	480	490	500
510	520	530	540	550	560	570	580	590	600
610	620	630	640	650	660	670	680	690	700
710	720	730	740	750	760	770	780	790	800
810	820	830	840	850					

## J. 135 Plates from number 0000 till 40 full, half & quarter numbers

70	72.5	75	77.5	80	82.5	85	87.5	90	92.5
95	97.5	100	102.5	105	107.5	110	112.5	115	117.5
120	122.5	125	127.5	130	132.5	135	137.5	140	142.5
145	147.5	150	152.5	155	157.5	160	165	170	175
180	185	190	195	200	205	210	215	220	225
230	235	240	245	250	255	260	265	270	275
280	285	290	295	300	305	310	315	320	325
330	335	340	345	350	355	360	365	370	375
380	385	390	395	400	405	410	415	420	425
430	435	440	445	450	460	470	480	490	500
510	520	530	540	550	560	570	580	590	600
610	620	630	640	650	660	670	680	690	700
710	720	730	740	750	760	770	780	790	800
810	820	830	840	850					

## K. 21 Plates for Flat Diamond Sieves (Eco)

50	60	70	80	90	100	110	120	130	140	150	160
170	180	190	200	210	220	230	240	250			

## L. 23 Plates for Flat Diamond Sieves (Prim)

30	40	50	60	70	80	90	100	110	120	130	140
150	160	170	180	190	200	210	220	230	240	250	

## M. 45 Plates for Flat Diamond Sieves (Prim)

30	35	40	45	50	55	60	65	70	75	80	85
90	95	100	105	110	115	120	125	130	135	140	145
150	155	160	165	170	175	180	185	190	195	200	205
210	215	220	225	230	235	240	245	250			



Accurate Precision in Measurements

**V**ishwa Engineering was established in the year 1995. We are the leading Wholesale & Supplier of Diamond Sieves, Diamond Assorting Sieves, Diamond Sieves Stand, Flat Diamonds Sieves, Diamond Sieve Jewelers Tool, Round Hole Diamond Sieve & Single Deck Diamond Sieve etc. Our offered products are highly demanded owing to its excellent quality. The product range is prepared by our skilled professionals using high quality raw material and ultramodern machines at our well-established production unit. Further, to make sure to provide our clients with the best quality, we procure our raw material from reliable sources after proper quality checks. This range is highly acknowledged for its precise design, high strength, easy handling and durability.

Apart from this, we have an in-house quality control unit which is provided with standard quality check equipment and devices to check the offered range against diverse quality standards and offer a flawless range to the clients. Our infrastructure is equipped with advanced machines, equipment and tools which aid us to carry out our processes in a smooth manner and meet the quality standards of the industry. Our team comprises of professionals who are highly experienced and capable to carry out their task efficiently. On the other hand, we offer this range in diverse specifications at a pocket-friendly cost. Besides, we have set high records in this industry owing to our excellent quality, expert team members and wide distribution network.



Accurate Precision in Measurements

**Manufacturers, Suppliers and Exporters  
of Diamond Assorting Sieves.**

**Factory :** Near Railway Station, Kadoli Road, Maroli - 396 436. Dist. Navsari (Gujarat) India.  
**Mo.:** 098259 07401, 093759 56655 **E-Mail :** dipakpanchal1225@gmail.com  
**http://www.indiamart.com/vishwaengineering-navsari**

**Residence :** 301, Gokul Flats, Near Jay Shankar Party Plot, Luncikui, Navsari - 396 445 (Gujarat) India.